



Welcome Valued Guest! We have provided you with a few complimentary items to get you through your first night's stay. Feel free to ask any Lodging team member if you need any of these items replenished. If you forgot to pack any other toiletry item, please come see us at the front desk. We should have what you need available for purchase.

The Air Force Inns Promise: "Our goal is to provide you a clean, comfortable room to guarantee a good night's rest and pleasant stay. If any part of your stay with us is not satisfactory, please provide the lodging manager or front desk staff an opportunity to 'make it right'."



Dear Guest,

Welcome to the Fairchild Inn - Fairchild Air Force Base, Washington!

We are so delighted and honored to have you with us. We are committed to providing you with the highest level of service and accommodations to make your stay relaxing and enjoyable.

We offer free Wi-Fi service to all our guests and it is available in all our facilities. We also provide complimentary coffee, tea and hot chocolate in our lobbies along with a few complimentary items in the room to make your stay a pleasant one.

Your feedback is very important to us, so we welcome any comments that you might have to help us “make it right.”

Should you require any additional service or information during your stay with us, please do not hesitate to contact the front desk or me at ext. 2105.

Again, thank you for choosing Fairchild Inn. Enjoy your stay!

Sincerely,

Lodging Management Team

EMERGENCY CONTACTS

92nd Security Forces

2071 Arnold Street
Fairchild Air Force Base
(509) 247-5493

DIRECTIONS: From main gate go straight onto Mitchell St, follow to Bong St. Turn right onto Strategic Air Command Blvd. At stop sign Security Forces will be on your left.

Airway Heights Police Department

1307 S. Ziegler St.
Airway Heights, WA
(509) 244-3707

DIRECTIONS: From Exiting main gate make a Right turn towards Airway Heights Hwy2. Follow US2 to S. Ziegler St. Your destination will be on the left.

FAFB Fire Department

1001 W Boston Avenue
Fairchild Air Force Base
(509) 247-5215

DIRECTIONS: From main gate go straight onto Mitchell St, follow to Bong St.at the stop sign turn Left. Make a right turn onto Arnold St. Turn Left on O'Malley Rd.

FAFB Medical Clinic

701 Hospital Loop, Suite 307
Fairchild Air Force Base
(509) 247-2361

DIRECTIONS: From main gate make a right onto Fairchild St. Go straight until you get to Offutt Pkwy make a Right. Turn Left onto S. Graham Rd the Clinic will be on your right.

Urgent Cares

Providence Main Clinic

421 S. Division St.
Spokane, WA
(509) 474-2100

DIRECTIONS: From Exiting main gate make a Right turn towards Airway Heights Hwy2 go through Airway Heights. Take I-90-E towards Spokane. Take exit 281 to 5th & Division. It's on the corner.

Rockwood Main Clinic

400 East Fifth Avenue
Spokane, WA
(509) 838-2531

DIRECTIONS: From Exiting main gate make a Right turn towards Airway Heights Hwy2 go through Airway Heights. Take I-90-E towards Spokane. Then take exit 281 to 5th St. keep going straight. Rockwood Clinic will be on your Right.

Hospitals

Deaconess Medical Center

800 West Fifth Avenue
Spokane, WA
(509) 473-5800

DIRECTIONS: From Exiting main gate make a Right turn towards Airway Heights Hwy2 go through Airway Heights. Take I-90-E towards Spokane. Take exit 280 Maple St Exit, keep going straight until Monroe St. Make a Right turn. Deaconess will be on your Left.

Providence Holy Family Hospital

5633 N. Lidgerwood St.
Spokane, WA
509-482-0111

DIRECTIONS: From Exiting main gate make a Right turn towards Airway Heights Hwy2 go through Airway Heights. Take I-90-E towards Spokane. Take exit 281 Make a Left on Division. Go straight down Division St. until you get to W. Central Ave. make a Right turn. Holy Family will be on your Right.

Providence Sacred Heart Hospital

105 W 8th Avenue
Spokane, WA
(509) 474-3131

DIRECTIONS: From Exiting main gate make a Right turn towards Airway Heights Hwy2 go through Airway Heights. Take I-90-E towards Spokane. Take exit 281 Make a Right on S. Division. Go Right on 8th and follow signs.

Dental

FAFB Dental Clinic

701 Hospital Loop
Fairchild AFB, WA
(509) 247-5829

DIRECTIONS: From main gate make a right onto Fairchild St. Go straight until you get to Offutt Pkwy make a Right. Turn Left onto S. Graham Rd the Clinic will be on your right.

Airway Heights Dental Clinic

13326 W. Sunset Hwy
Airway Heights, WA
(509)244-3655

DIRECTIONS: From Exiting main gate make a Right turn towards Airway Heights Hwy2. Follow US2 to S. Ziegler St. Your destination will be on the left.

West Plains Dental Clinic

9713 W. Sunset Hwy
Airway Heights, WA
(509) 456-4220

DIRECTIONS: From Exiting main gate make a Right turn towards Airway Heights Hwy2. Follow US2. After Traffic circle take 2nd exit to the Right

In an emergency situation, please call 911



ROOM RATES

VAQ \$79.00
VQ \$94.00
TLF \$101.00
DVQ \$101.00
LARGE DVQ \$101.00

PET FRIENDLY TLF ADDITIONAL \$10.00

CHECK-OUT TIME: 1100

CHECK-IN TIME: 1400

ALL ROOMS ARE NON-SMOKING

RETURN CHECK FEE \$50.00

Pet Fees

Pets are prohibited except in rooms designated as Pet Friendly units. Guest may be charged up to a \$150.00 cleaning fee based on expenses incurred to return the room to available inventory when pet friendly TLFs require extraordinary cleaning or incur damages AFMAN 34-135, para 3.18.3.

Smoking Fees

Smoking is prohibited in all lodging facilities. A cleaning fee of up to \$150.00 will be assessed if indication of smoking is discovered. AFMAN 34-135, para 3.5.1.

Excess Cleaning Fees

If upon your checkout, the room is left a mess, or there are damages, you may be charged an additional cleaning fee, as well as fair wear and tear replacement costs for lodging property. Please do not leave excessive trash upon check out as you may be charged additional cleaning fees. AFMAN 34-135, para 3.5.4.

Checkout Time 1100 AM

Note: Should you require a late checkout, please contact the front desk by dialing 0. Please be aware that this may generate a late checkout fee, which is full room rate. AFMAN 34-135, para 5.6.9.

GUEST SERVICES

Fax Service

Official/local fax service to DSN numbers is available at the front desk. Additional services are available at the Education Center at 247-2348 or Library at 247-5556.

Fitness Rooms

Bldg 2392 - Basement

Bldg 1252 - 1st floor

Note: Guests under 18 years of age must be accompanied by an adult.

Sundry

Available at the Front Desk for purchase

Ice Machines

Bldg 2272 - basement laundry room

Bldg 2392 - 2nd floor

Bldg 2399 - laundry room

Bldg 1252 - all floors

Laundry Rooms

All lodging facilities are equipped with washers and dryers. See building floor plans for locations.

Smoking Area

Designated Smoking Area is located on the side of Bldg 2399 by the picnic table. Please see "Map" tab to find the designated area.

Business Centers

Internet and printer services are available in Business Centers, located in Bldg 1252 (Survival) and Bldg 2392 (Main Base). Official/local fax and copy services are available at the front desk 24/7.

Conference Room

Conference room is located in Bldg 2392 and is available for use by lodging guests.

HOUSEKEEPING SERVICE

Housekeeping service is provided 7 days a week from 0800 to 1400 unless a “Do Not Disturb” sign is displayed. Guests must allow housekeeping to access their rooms at least once every three days. Housekeeping must enter pet friendly units daily.

DAILY SERVICES

Clean and empty wastebaskets
Restock Amenities
Clean floors and carpet
Clean Toilet
Make beds
Clean vanities, sinks, mirrors, showers and tubs
Replace towels on floor

WEEKLY SERVICES

Change sheets and pillow cases
Make bed
Light dusting
Change shower curtain
Clean doors

Housekeeping does not touch personal belongings. Please place personal belongings in the closet or on the luggage rack. Contact the front desk for specialized cleaning service.

GUEST RESPONSIBILITIES

In order to ensure the comfort and safety of all our guests, we ask that you please abide by the following guidelines:

- Weapons and ammunition are prohibited.
- Cooking is only permitted in rooms with cooking appliances. Use of hot plates is strictly prohibited.
- Do not store flammable liquids in your room.
- All pots, pans, dishes and utensils must be washed by guest during their stay.

TELEPHONE DIALING INSTRUCTIONS FOR EMERGENCY DIAL 911

Room to Room	Dial room extension
Front Desk	0
Base Operator	99 + 0
On Base Calls	99 + XXX--XXXX
CONUS DSN	97 + 94 + DSN
OCONUS DSN	Use Lobby phone in Bldg. 2392
Local	99 + 509 + local number
Toll Free/800/844/855/866/877/888 etc	99 +1+ Number
Direct Dial Long Distance (\$0.10/min)	99 + 1 + Area Code + Number
Long Distance Collect	0 + calling card & collect 99 + area code + number
International <small>(rates are available at the front desk)</small>	99 + 011 + country code + number
International Collect	99 + 01 + Number Wait for operator

TO REGISTER/CHANGE AUTOMATIC WAKEUP

Dial 73050 and follow the prompts to set a wakeup call.

To Cancel Automatic Wakeup:

Dial 73050, press 2 to cancel the wakeup call.

To Retrieve Messages From Your Telephone Mail Box:

To retrieve and / or delete messages from your room dial **6000** and follow the voice prompts.

(Note: if you have a Cisco Phone you may just press the message button)

Please DO NOT unplug the phone cable.

ON BASE DINING

Alder House Pub and Grill-10 W. Ent St., FAFB

509-247-5053

DIRECTIONS: From Lodging make a left turn onto Fairchild St. At stop sign make your first right and it will be on your left. Café is Located in the back ½ of the Red Morgan Building

Burger King-Fairchild St., FAFB

509-244-2680

DIRECTIONS: From lodging make a left turn. Go straight Burger King will be on your right.

Final Point-1010 W. Survival Loop, FAFB

509-244-2865

DIRECTIONS: Turn right onto Fairchild St, Right on Eaker Ave. Turn right onto Mitchell St, then turn left onto Eaker Ave, turn right on Oak St. Keep going straight, at the railroad tracks make a right turn. Go around flight line. Keep going straight around lodging and it will be the first building on your right.

Flight Kitchen-100 West Bong. FAFB

509-247-2614

DIRECTIONS: From Lodging make a left turn. At Sac Boulevard make a left turn. At stop sign make a right onto Bong St. Dining Facility will be on your right.

Food Court-101 W. Spaatz Rd., FAFB

509-244-6596

DIRECTIONS: From lodging make a left turn. At Sac Boulevard make a right turn it is straight ahead on your left inside BX.

Sgt. Roger A. Ross Memorial Dining-1020 W. Survival Loop, FAFB

509-247-5553

DIRECTIONS: Turn right onto Fairchild St, turn right on Eaker Ave, Turn right onto Mitchell St, then turn left onto Eaker Ave, turn right on Oak St. Keep going straight, at the railroad tracks make a right turn. Go around flight line. At the stop sign keep going straight and the Dining Facility will be on your right.

Fairchild Warrior Dining Facility- 100 W. Bong St., FAFB

509-247-5353

DIRECTIONS: From Lodging make a left turn. At Sac Boulevard make a left turn. At stop sign make a right onto Bong St. Dining Facility will be on your right.

LOCAL DINING

Area Code 509

Atilantos Mexican Food

12526 W. Sunset Ave.
Airway Heights, WA
315-8891

d'wali Asian Bistro

12924 W. Sunset Ave.
Airway Heights, WA
230-8629

Domino's Pizza (Delivery)

12622 Highway 2#B
Airway Heights, WA
244-2555

Fusion Korean (Delivery)

13112 W. Sunset Hwy
Airway Heights, WA
244-9921

Jimmy Johns

10829 US-2 Ste. 1
Airway Heights, WA
474-0796

Lai Lai Gardens

13008 W Sunset Hwy
Airway Heights, WA
244-0197

LaPresa Mexican Restaurant

13308 W Sunset HWY
Airway Heights, WA
244-7001

Longhorn BBQ

7611 W Sunset Hwy
Airway Heights, WA
838-8372

Mongolian BBQ

10414 US-2
Airway Heights, WA
747-2061

**Northern Quest Casino
(Multiple eating establishments)**

<https://www.northernquest.com>
100 N. Hayford Rd.
Airway Heights, WA
877-871-6772

Panda Express

11930 W. Sunset Hwy
Airway Heights, WA
244-7025

Pizza Hut (Delivery)

11820 W. Sunset Hwy
Airway Heights, WA
244-4300

Rusty Moose

9105 W US-2
Spokane, WA
747-5579

Sala Thai Restaurant

12914 W. Sunset Hwy
Airway Heights, WA
244-4800

Shamus's Sandwich Shoppe

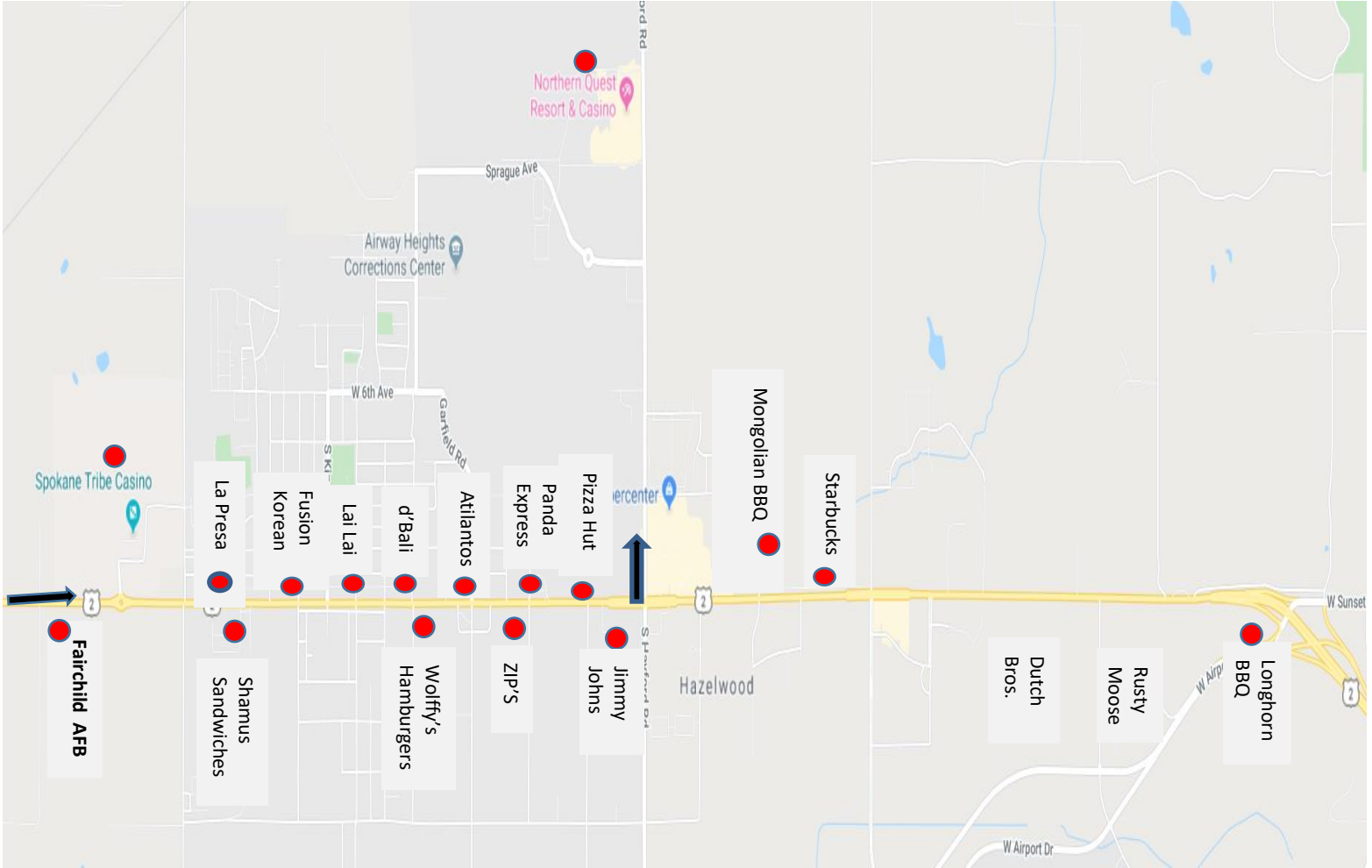
13311 W. Sunset Hwy.
Airway Heights, WA
863-9865

ZIP's Drive-In

12421 W. Sunset Hwy.
Airway Heights, WA
244-0600

AIRWAY HEIGHTS LOCAL DINERS

Directions: Exit Main gate make a right turn and go straight into Airway Heights.



SPOKANE DINING

AMERICAN

FRANKS DINER-1516 W. 2nd Ave. Spokane, WA

(509) 747-8798

DIRECTIONS: From Exiting main gate make a Right turn towards Airway Heights Hwy2 go through Airway Heights. Take I-90-E towards Spokane. Follow I-90 E. to exit 280. Follow S. Walnut St. to your destination

ASIAN

SUSHI MARU-808 W. Main Ave #105, Spokane, WA

(509) 455-3900

DIRECTIONS: From Exiting main gate make a Right turn towards Airway Heights Hwy2 go through Airway Heights. Take I-90-E towards Spokane. Take exit 281. Follow Division St and W. Spokane Falls Blvd to your destination.

PF CHANGS-801 W. Main Ave, Spokane, WA

(509) 456-2166

DIRECTIONS: From Exiting main gate make a Right turn towards Airway Heights Hwy2 go through Airway Heights. Take I-90-E towards Spokane. Take exit 280. Follow W. 4th Ave and S. Lincoln St. to Main Ave. Continue straight onto W. 4th Ave. Slight left toward S. Lincoln St. Then turn left onto S. Lincoln St. Turn Right onto W. Main Ave. Destination will be on your right.

BREWERY's & PUBS

BOSTON RESTAURANT-14004 E. Indiana Ave. Spokane Valley, WA **(509) 927-4284**

DIRECTIONS: From Exiting main gate make a Right turn towards Airway Heights Hwy2 go through Airway Heights. Take I-90-E to N. Evergreen Rd. in Spokane Valley. Take exit 291A from I-90 Continue on N. Evergreen Rd to your destination.

FLYING GOAT-3318 W. Northwest Blvd. Spokane, WA

(509) 327-8277

DIRECTIONS: From Exiting main gate make a Right turn towards Airway Heights Hwy2 go through Airway Heights. Take I-90-E towards Spokane. Take exit 280 N. Maple to W. Northwest Blvd. Use the left 2 lanes to turn Left onto S. Walnut St. Then use the left 2 lanes to turn slightly left to stay on S. Walnut St (signs for Maple Street Bridge) Continue onto N. Maple St. Use the left 2 lanes to turn left onto W. Northwest Blvd. Destination will be on the right.

NO-LI Brewhouse-1003 Trent Ave #170.Spokane, WA

(509) 242-2739

DIRECTIONS: From Exiting main gate make a Right turn towards Airway Heights Hwy2 go through Airway Heights. Take I-90-E towards Spokane. Take exit 282 go straight onto N. Hamilton St. Turn right onto E. Springfield Ave. Turn Right. Destination on Left.

STEALHEAD BAR & GRILL-218 N. Howard St. Spokane, WA

(509) 747-1303

DIRECTIONS: From Exiting main gate make a Right turn towards Airway Heights Hwy2 go through Airway Heights. Take I-90-E towards Spokane. Use the right 2 lanes to take exit 280 from I-90 E. Continue on W 4th Ave. Take S Lincoln St to N. Howard St. Continue straight on W 4th Ave. Slight left toward Lincoln St. Turn Left onto S. Lincoln St. Turn right onto Main Ave. Turn left onto N. Howard St. Your destination will be on the right.

ITALIAN

LUIGI's-245 W. Main Spokane, WA

(509) 624-5226

DIRECTIONS: From Exiting main gate make a Right turn towards Airway Heights Hwy2 go through Airway Heights. Take I-90-E towards Spokane. Use the right 2 lanes to take exit 281 toward US-2 E/US-395N/Newport/Colville. Merge onto US-2 E/US-395 N/S Division St. Continue on Riverside Ave. Drive to W. Main Ave. Turn left onto W. Riverside Ave. Turn right onto N. Bernard St. Turn right onto W. Main Ave. Destination will be on your right.

OLD SPAGETTI FACTORY-152 Monroe St. Spokane, WA

(509) 624-8916

DIRECTIONS: From Exiting main gate make a Right turn towards Airway Heights Hwy2 go through Airway Heights. Take I-90-E towards Spokane. Use the right 2 lanes to take exit 280 towards Lincoln St. Continue on S. Walnut St. Take W 1st Ave to S. Monroe St. Use the left 2 lanes to turn left onto Walnut St. Slight right towards 1st Ave. Turn right onto W 1st Ave. Turn Right onto S. Monroe St Destination will be on your right.

Seafood

ANTHONY'S-510 North Lincoln Spokane, WA

(509) 328-9009

DIRECTIONS: From Exiting main gate make a Right turn towards Airway Heights Hwy2 go through Airway Heights. Take I-90-E towards Spokane. Use the right 2 lanes to take exit 280 from I-90 E. Continue on W 4th Ave. Take S Lincoln St to N. Howard St. Continue straight on W 4th Ave. Slight left toward Lincoln St. Turn Left onto S. Lincoln St. Use the Left 2 Lanes to turn left onto W. Main Ave. Use any lane to turn slightly rights onto N. Monroe St. Turn right onto W. Bridge Ave/W. Summit Pkwy. Turn right.

BASE AND COMMUNITY SERVICES

FSS Command Section

(509) 247-5484

**Airman & Family
Readiness Center**

4 West Castle St
247-2246

Alterations

244-6348

**Aquatics Center
(Indoor Pool)**

300 Castle St
247-2242

**Aquatics Center
(Outdoor Pool)**

200 East Castle St
247-2242/ 2631

Arts & Crafts Center

610 N Depot Ave
247-3038 /4965

Auto Hobby Shop

220 West Castle St
247-2310

Base Chapel

300 Poplar Ave
247-2264

Base Housing Office

244-9044/247-6500

Base Information

247-1212

Base Operations

247-5202

Base Theater

247-5600

Barber Shop (Main)

244-2848

Barber Shop (SERE)

244-2848

Beauty Shop

244-5380

AAFES/BX

244-2832

**Child Development
Center**

201 E Fairchild Hwy
247-2403/ 2408

Civilian Personnel

7 West Arnold St
247-4313

**Clear Lake
Recreation Area**

14824 Clear Lake Rd
299-5129/247-5920

Command Post

247-4051

Commissary

105A W Spaatz Rd.
244-5591

Education & Training

6 West Castle St.
247-2348

Engraving

610 N Depot Ave
247-2434

FamCamp

326 El Paso
244-247/5920

Family Child Care

610 N Depot Ave
247-5336

Family Health Clinic

247-2361

Family Services

247-5154

Family Support

247-2246

Finance Customers

247-3748

Fitness Center

300 Castle St
247-2791/2792

Flight Kitchen

247-2614
Fax: 247-2064
Flight-ground meals &
Grab-n-go 24/7

Frame Shop

610 N Depot Ave.
247-3038

**FSS (Club) Card
Staff**

10 West Ent St
247-1800

Honor Guard

Gate 23 Rd
Triple F
247-4713
after hours
208-7103

ITT

101 W Spaatz Rd
247-5649

Library

2 W Castle St
247-5556 /5228

Main Gate

247-5495

**Military Personnel
Section (ID Cards)**
7 West Arnold St.
247-4023

**Military Clothing
Dry Cleaning**
244-3324

**NAF Human
Resources**
7 West Arnold St
247-3233/8007

**Outdoor Recreation
Connection
Pass & ID**
247-5071

Postal Service (PCS)
247-5875

Preteen Center
5 West Bong St
247-8043

Readiness
247-9617/4566

Red Morgan Center
10 West Ent St
247-1800

Security police (LE)
247-5493

Shoppette
300 North SAC Blvd
244-5095

**Survival Fitness
Center**
901 West Artillery Rd
247-2991

Tanker Tails Kennel
9 Sports Range Rd
247-4699

Teen Center
5 West Bong St
247-8043

TMO (Inbound)
247-5626

TMO (Outbound)
247-5815

Wood Craft Center
610 N Depot Ave
247-5189

Youth Center
247-5601

Youth Sports Office
10 West Ent St
247-5619

**Veterinarian
Services**
402 North Vet Rd
247-2583

Banks
Global Credit Union
244-9216

ATM Locations
Shoppette
BX
Commissary
Survival Lobby Bldg. 1252

LOCAL POINTS OF INTEREST

Cat Tales Zoological Park

17020 N. Newport Hwy
Mead, WA
238-4126

Flying Squirrel

15312 E. Sprague Ave.
Spokane Valley, WA
242-3831

GET AIR (Trampoline Fun)

4750 N. Division St.
Spokane, WA
363-5422

John A. Finch Arboretum

3404 W. Woodland Blvd.
Spokane, WA
363-5455

Manito Park and Gardens

1702 S. Grand Blvd\
Spokane, WA
324-7000

Mobius Children's Museum

808 W/ Main Ave
Spokane, WA
(509) 321-7121

NorthTown Mall

4750 N. Division St
Spokane, WA
(509) 482-0209

Riverfront Park Mall

507 N. Howard
Spokane, WA
(509) 625-6600

Sky High Sports Trampoline Fun

1322 E. Front Ave
Spokane WA
(509)-321-5867

Northern Quest Casino

(Food, Kids Quest, Movie Theater
122 N. Hayford Rd.
Airway Heights, WA
877-871-6772

Silverwood Theme Park

27243 N. Hwy. 95
Athol, ID
(208) 683-3400

Spokane Arena

720 W. Mallon
Spokane. WA
(509) 324-7000

Spokane Valley Mall)

14700 E. Indiana Ave
Spokane Valley, WA
926-3700

BEAUTIFUL TRAILS TO WALK/DRIVE (KID FRIENDLY)

Bowl & Pitcher Trails

4427 N. Aubry L. White Pkwy
Spokane, WA

Centennial Trail Park

S A St & W. Clark Ave.
Spokane, WA

Cliff Drive-Overlooking Spokane

W. Cliff Dr.
Spokane, WA

Rim Rock View-Overlooking Spokane

2-198 S. Rimrock Dr.
Spokane, WA

WEBSITES

WWW.INLANDER.COM

WWW.VISITSPOKANE.COM

WWW.WTA.COM

VETERINARY CLINICS & KENNEL SERVICES

VET CLINICS

Fairchild Veterinarian Services Building

402 North Vet Rd. Building 2424

FAFB, WA

(509) 247-2583/2584

DIRECTIONS: From front gate turn right onto Fairchild St. Then Turn right onto Vet Rd.

Kings Veterinary Clinic

1521 S Mullan RD

Airway Heights, WA

(509) 244-5549

DIRECTIONS: When exiting front gate turn right towards Airway Heights. Go through traffic circle and make a right onto Mullan Rd. Clinic will be on your left after the Post Office.

Medical Lake Veterinary Clinic

7616 S. Bartholomew Rd.

Medical Lake, WA

(509) 299-3675

DIRECTIONS: When exiting front gate turn right towards Airway Heights. Go through traffic circle and make a right onto Craig Rd. Turn right onto Thorpe and then quick left onto S. Craig Rd. At the traffic circle take the 1st exit onto WA-902-W. Turn right onto S. Bartholomew Rd.

West Plains Veterinary Clinic

2611 W Sunset Hwy, # B

Airway Heights, WA

(509) 747-2577

DIRECTIONS: When exiting front gate turn right towards Airway Heights. Go through traffic circle and keep going straight. Make a Left on Hayford Rd. Make a quick right into Wal-mart parking lot. Past Taco Bell you will see the Vet clinic next to the Noodle House.

KENNELS

Fairchild Tanker Tails Kennels

9 Sports Range Rd. Building 109

FAFB, WA

(509)247-4699

DIRECTIONS: From front gate continue straight onto Mitchell St. Turn left onto Eaker Ave. Make a left onto Sport Range Rd and then make a sharp left.

West Wind Kennels

5620 S Craig Rd

(509) 244-2259

DIRECTIONS: Turn right onto US-2. Then make a right turn on Craig Rd. At stop sign turn right on W. Thorpe. Then a quick left on S. Craig Rd. Your destination will be on your right about ½ mile down the road.

Whispering Oak Kennels

12815 W. Medical Lake hwy.

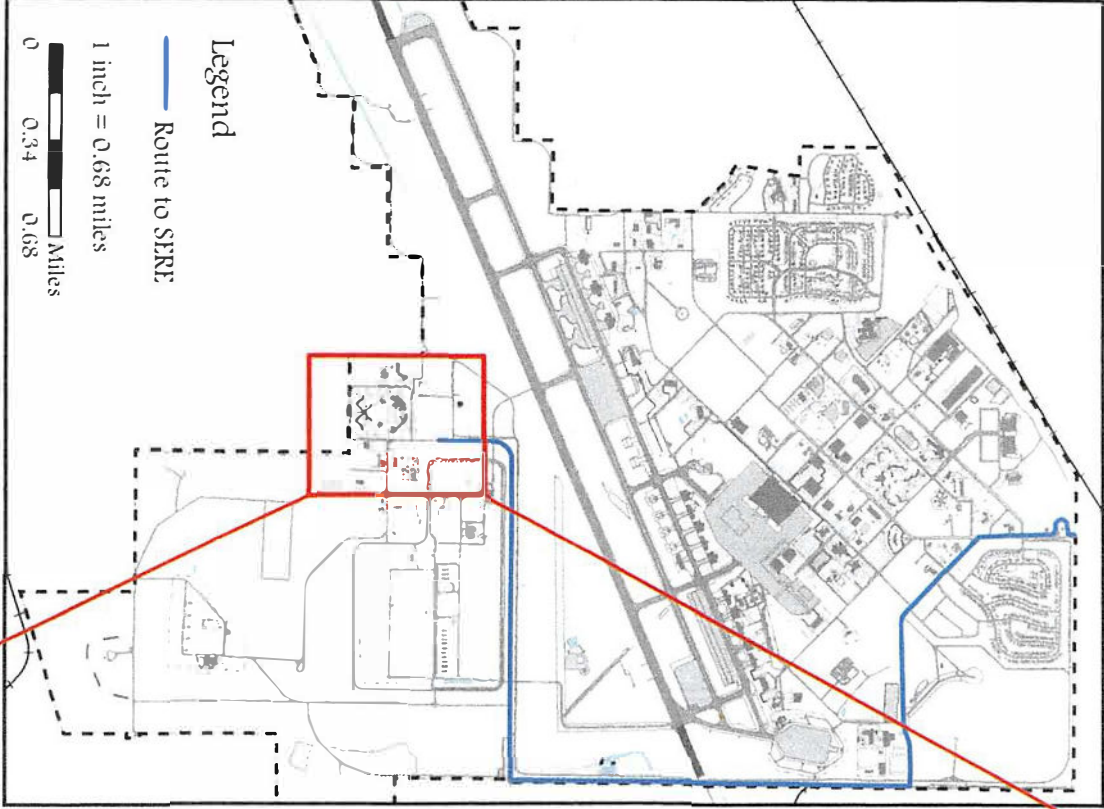
Medical Lake, WA

(509) 991-3075

DIRECTIONS: Turn right on US-2. Turn right on S Craig Rd. Turn right on W. Thorpe. Turn left on S. Craig Rd. Turn left on W. medical lake Rd.

TRANSPORTATION NUMBERS

Bill's Friendly Taxi	509-951-5445
Bull Dog Taxi	509-724-3025
Spokane Cab	509-568-8000
Red and Black Taxi	509-768-7573
Val in Time Taxi	509-217-7793
Vinny Cab	509-619-8757
5 Star Taxi	509-863-6910
Spokane Bus Transit	509-328-7433
24/7 Cab	509-768-9407
Vehicle Operations (Main)	509-247-2244
Vehicle Operations (Survival)	509-247-5511



FSS LODGING



2 CFS/CENAFM, Geobase,
 W. Air Mobility Command
 Hinchfield AFB, WA, 99011
 247-3399



Magnetic Declination:
 14° 40' E ± 0.25'
 changing by 0.8' W per year

24 August 2017



Projection: UTM, Zone 11N
 Datum & Spheroid: NAD83/NAVT88
 This Material is for Official Use Only.

FSS LODGING

Legend
 Route to Duplexes
 Lodging Facilities

1 inch = 1,250 feet
 0 625 1,250 feet

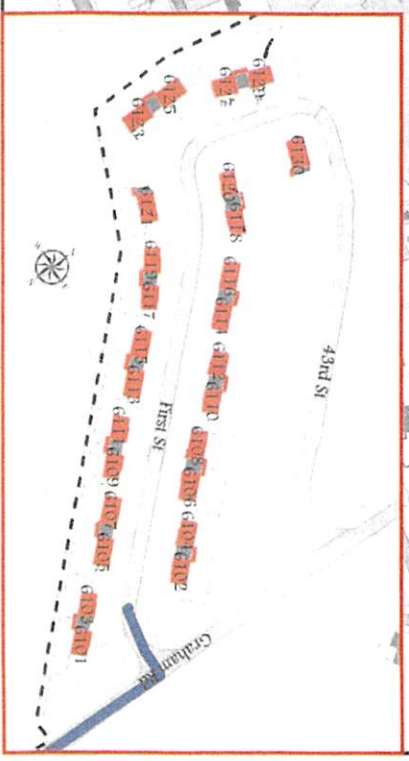
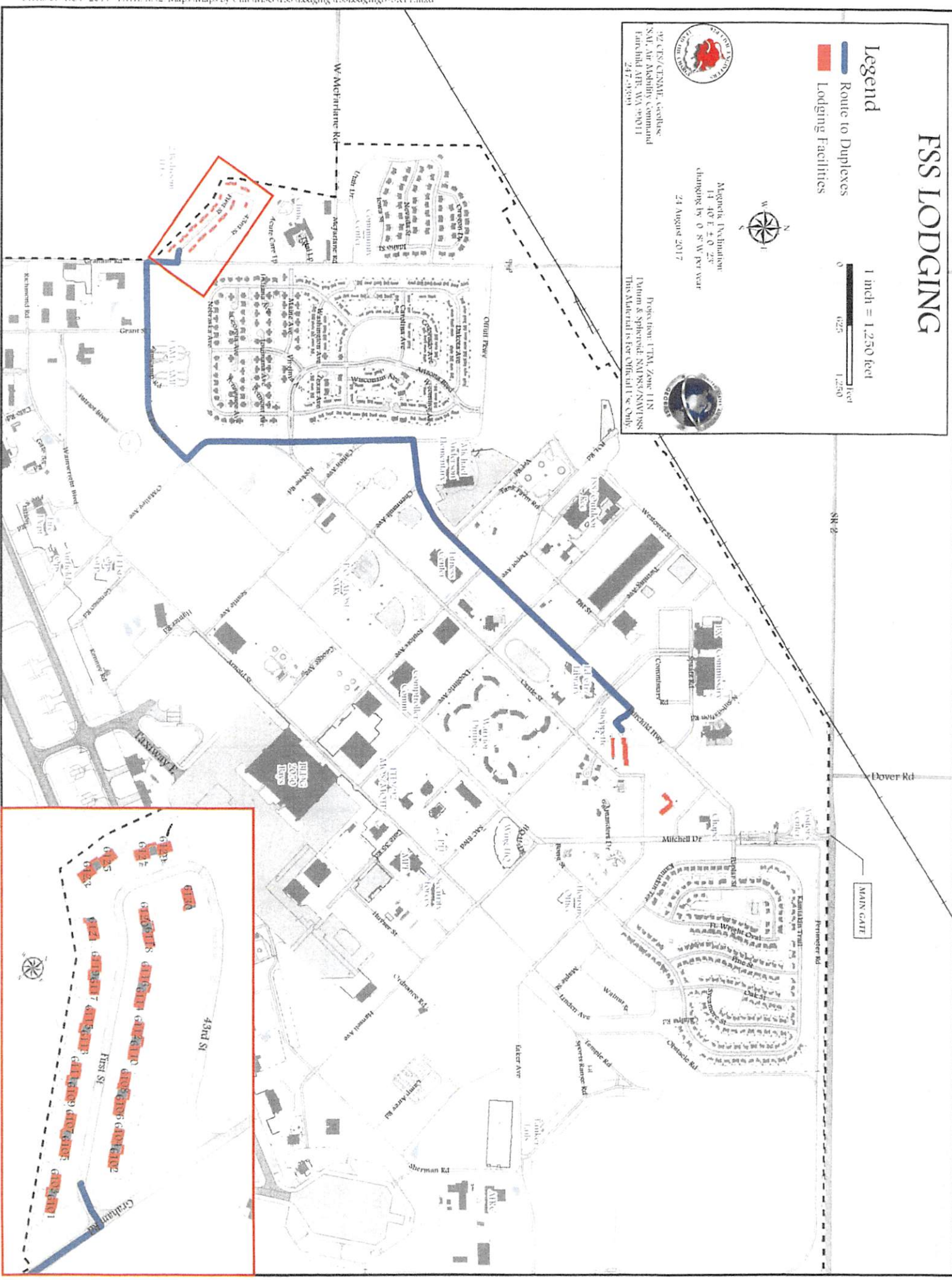


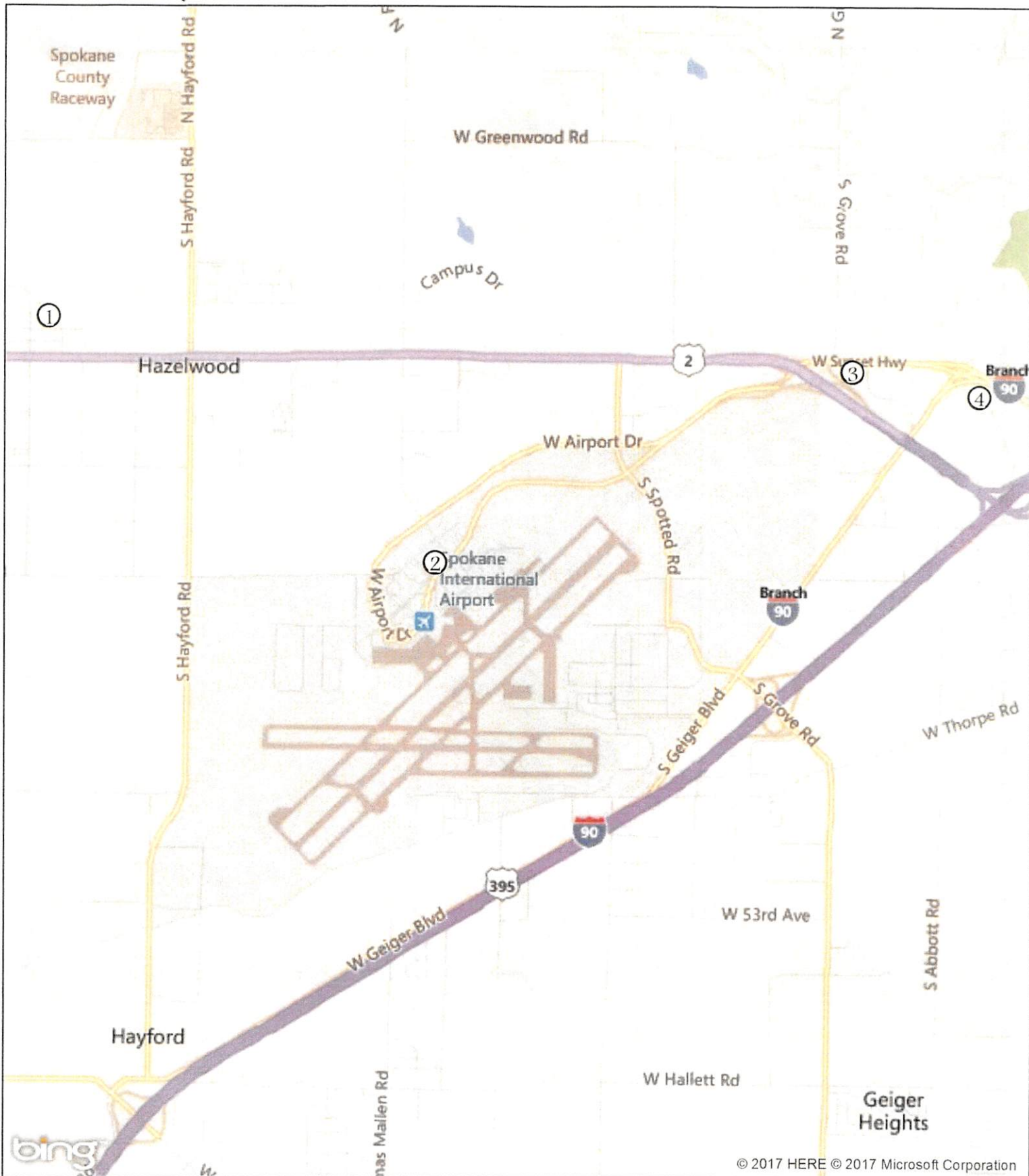
92 CTS/CENAF, ceolab:
 SMI Air Ashling Command
 Fitchfield AFB, VA 22011
 247.3930

Margaret Imbination
 14 40 E 40 2E
 changing by 0 8 W PT year
 24 August 2017



Pages from: 1 TMA, Zone 11N
 Datum & Spheroid: NAD83/NAD1983
 This Material is For Official Use Only



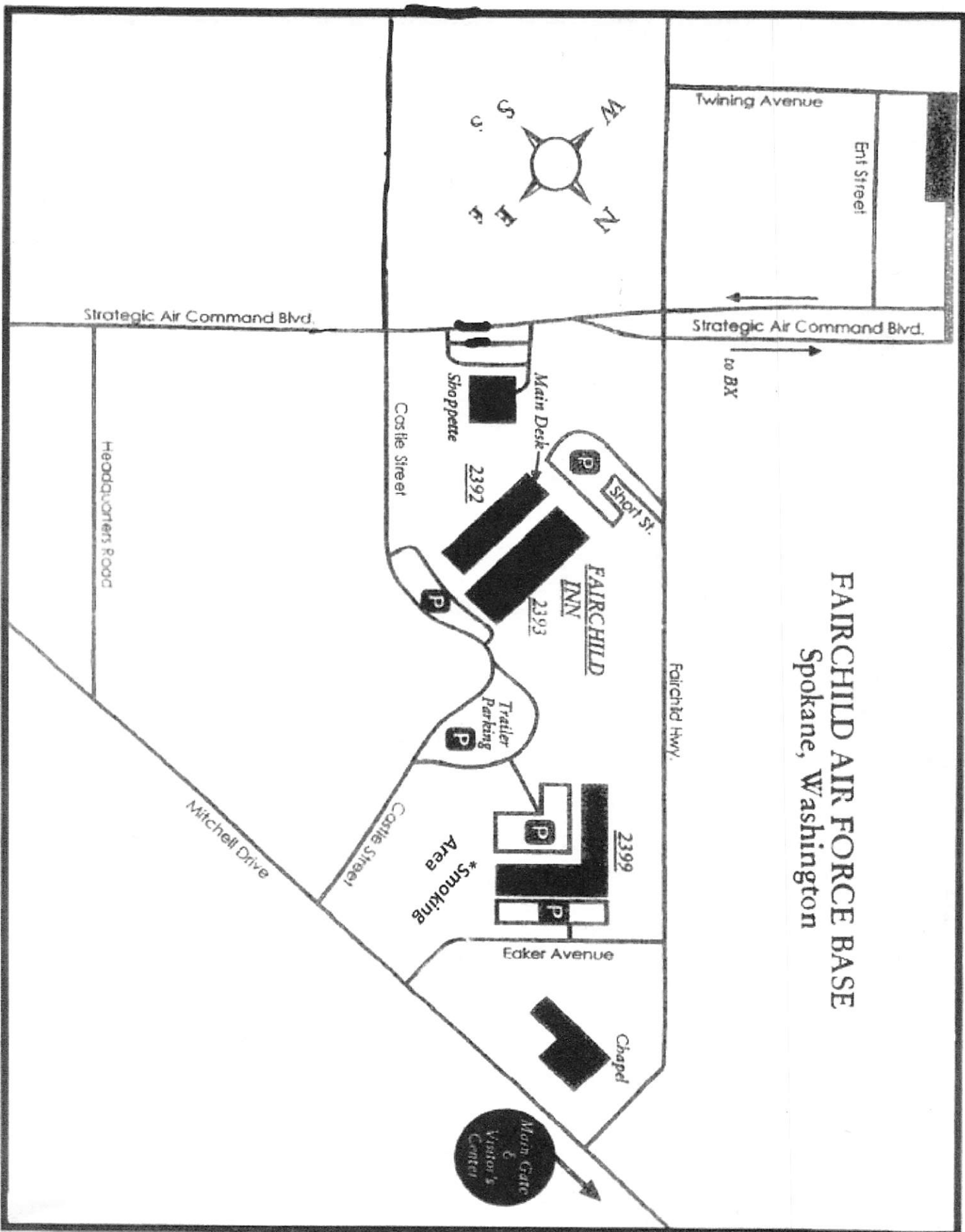


Contract Quarters, Address, and Phone number

1. Stratford Suites 11808 W. Center Ln., Airway Heights, WA 99001 509-321-1600
2. Windgate By Wyndham 2726 S Flint Rd., Spokane International Airport, Spokane, WA 99224 509-838-3226
3. Hampton Inn 2010 S. Assembly Rd., Spokane, WA 99224 509-747-1100
4. Holiday Inn Spokane Airport 1616 S. Windsor Dr., Spokane, WA 99224 509-838-1170



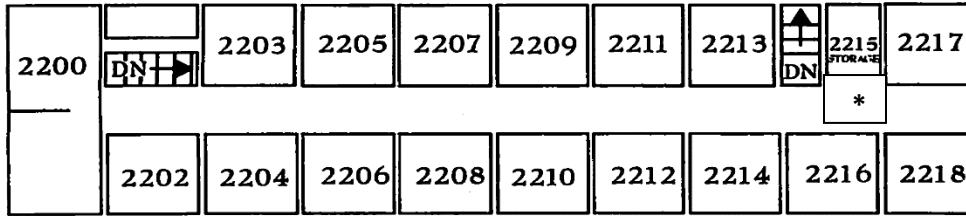
FAIRCHILD AIR FORCE BASE Spokane, Washington



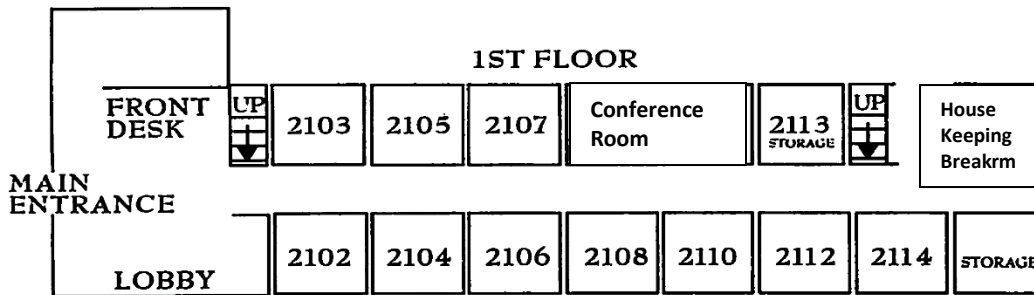


BUILDING 2392 FLOOR PLAN

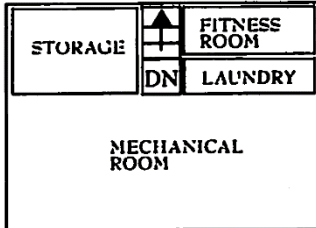
2ND FLOOR



1ST FLOOR



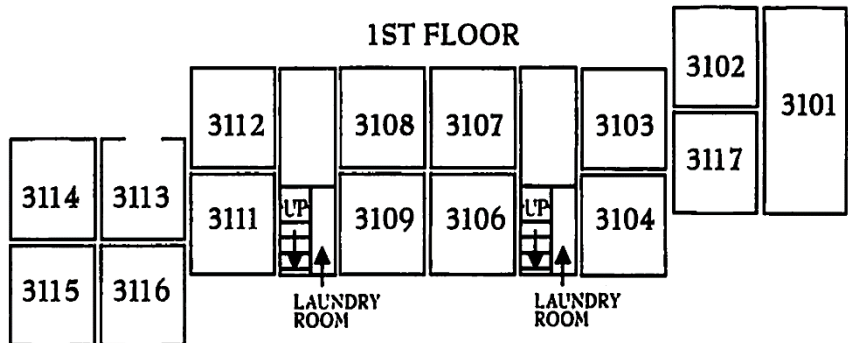
BASEMENT



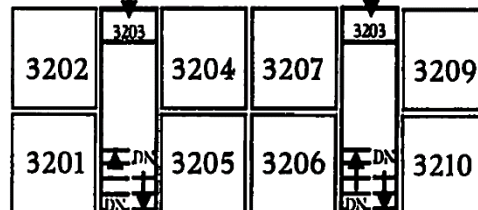
- 2102 Front Desk Mgr.
- 2103 Accounting
- 2104 Quality Assurance
- 2105 Manager
- 2106 Operations
- 2107 Supply
- 2108 Guest Office
- 2110 Housekeeping
- 2112 Maintenance
- * ICE Machine

BUILDING 2393 FLOOR PLAN

1ST FLOOR

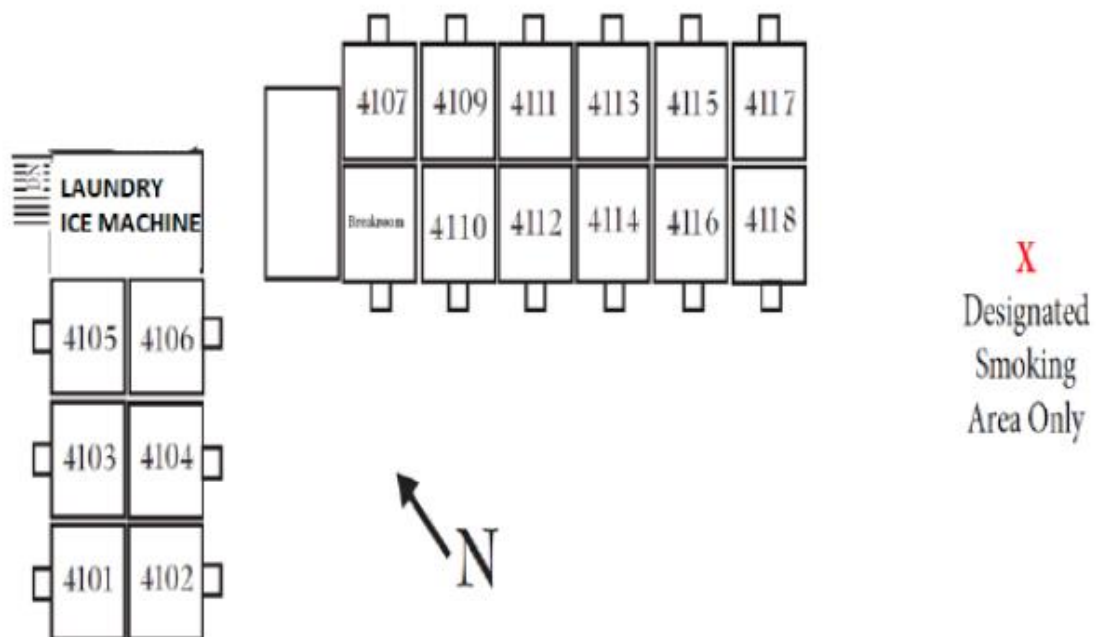


2ND FLOOR



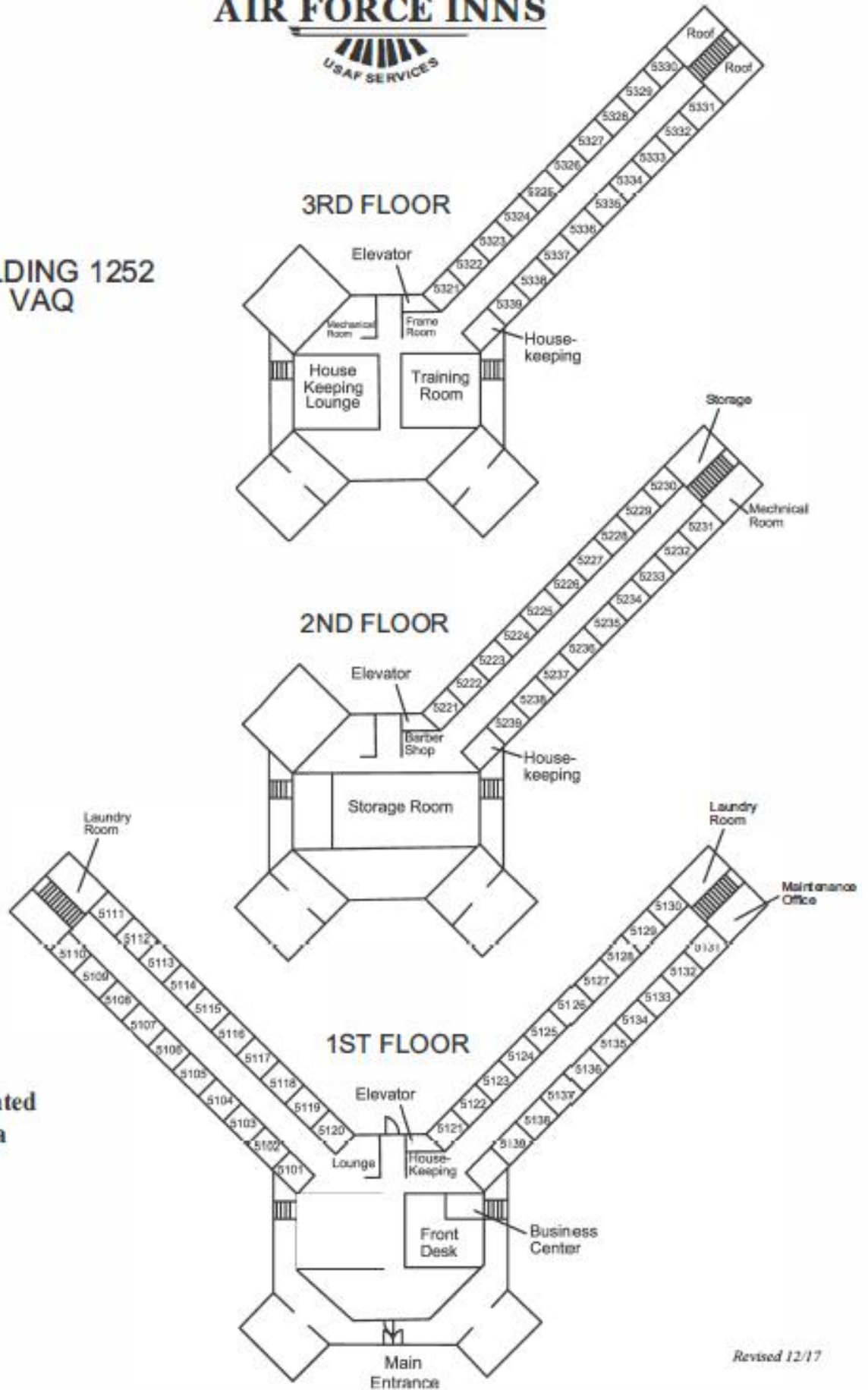


FAMILY QUARTERS (TLF) BUILDING 2399





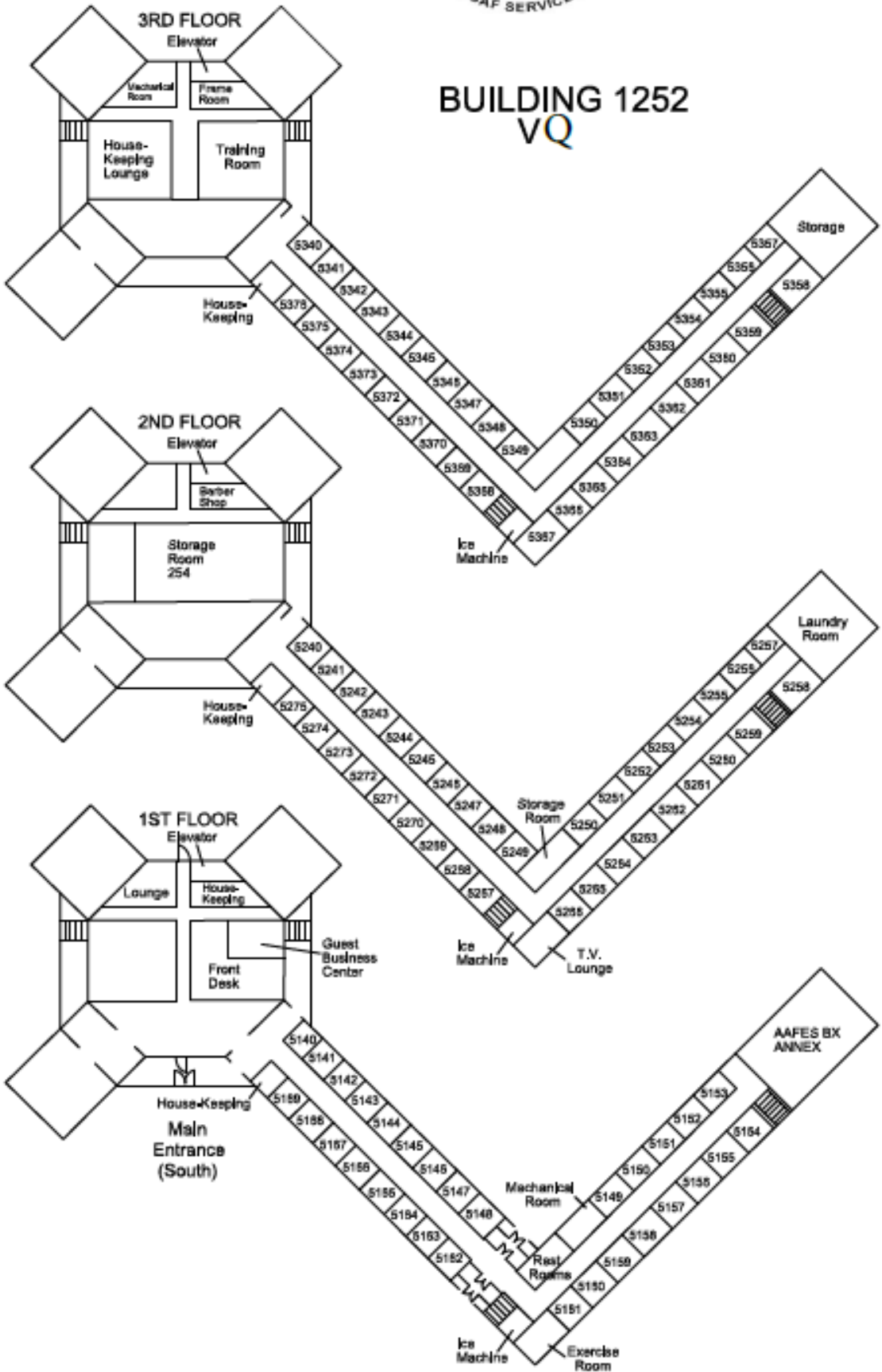
BUILDING 1252
VAQ



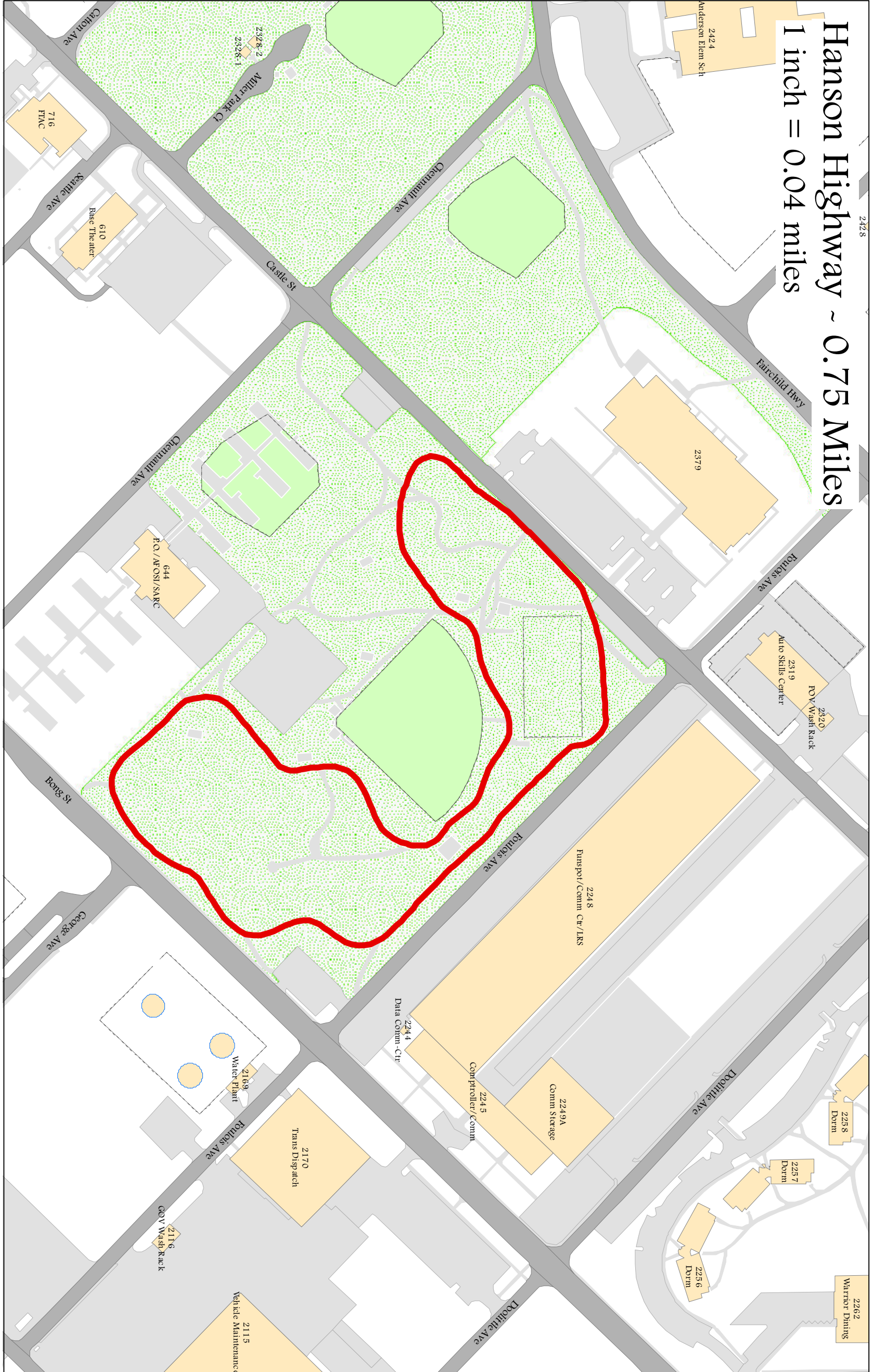
Pavilion-Designated
Smoking Area
X



BUILDING 1252
VQ



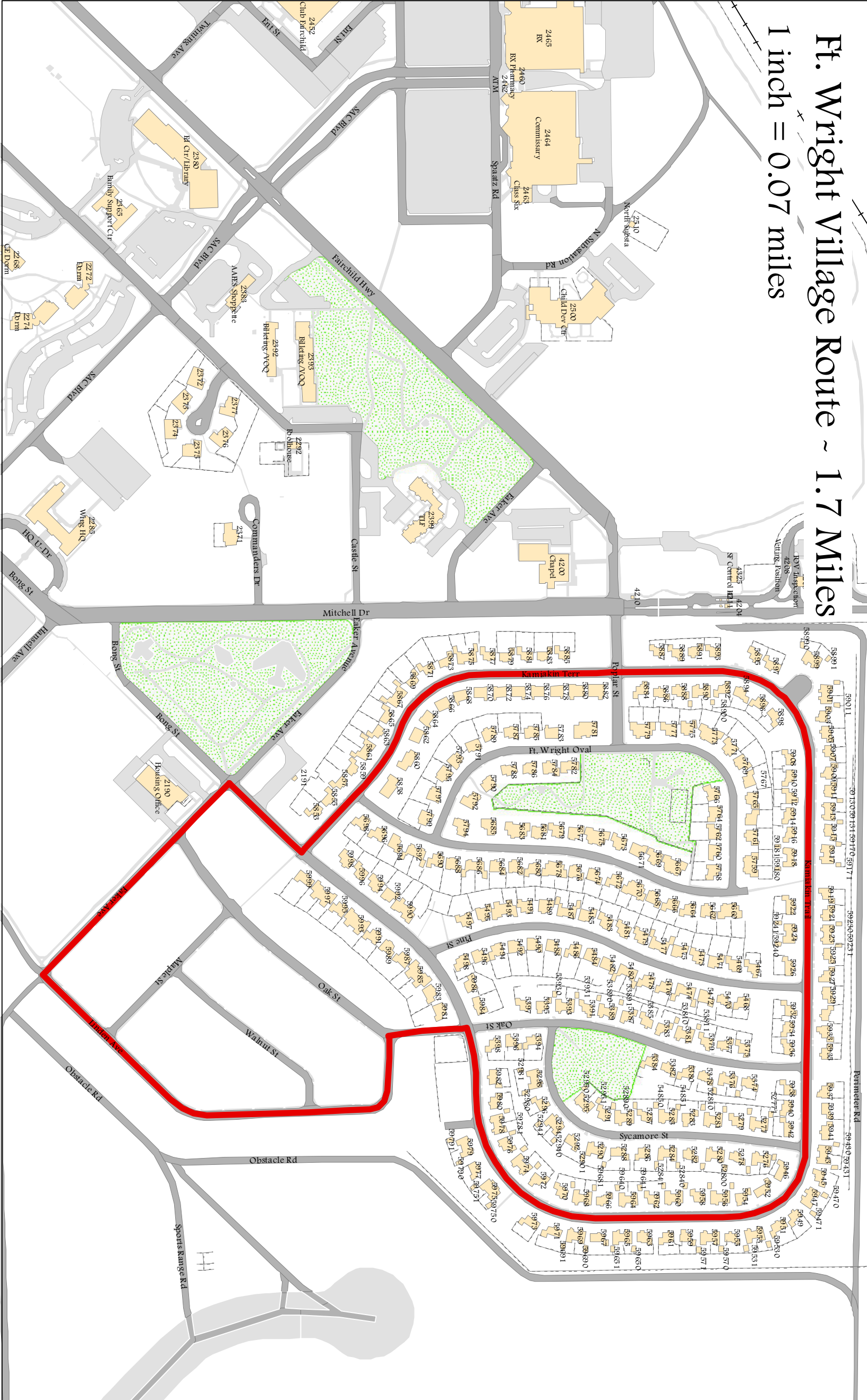
Hanson Highway - 0.75 Miles
1 inch = 0.04 miles



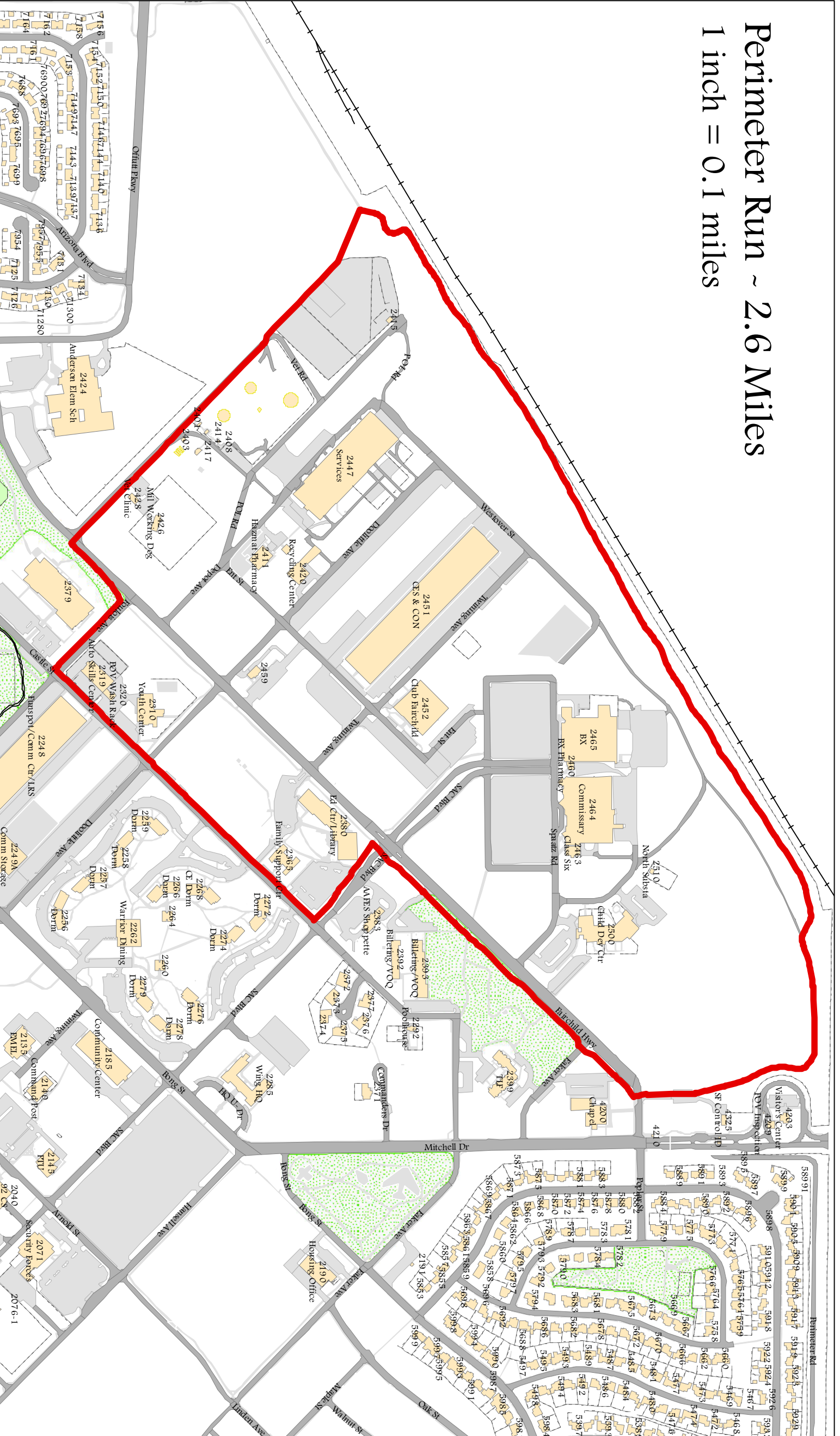
Hospital Loop - 2.5 Miles
1 inch = 0.1 miles



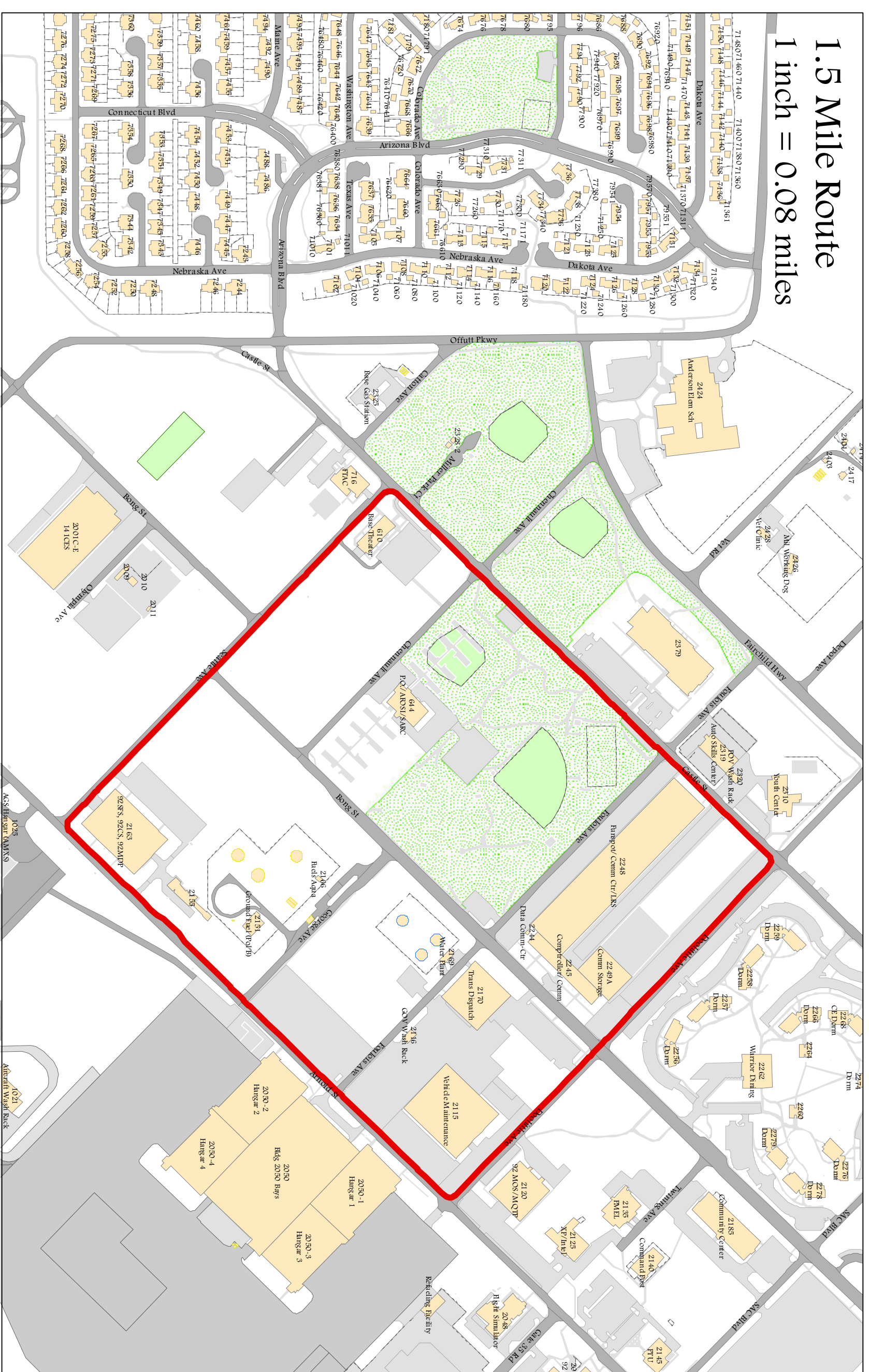
P. Wright Village Route - 1.7 Miles
1 inch = 0.07 miles



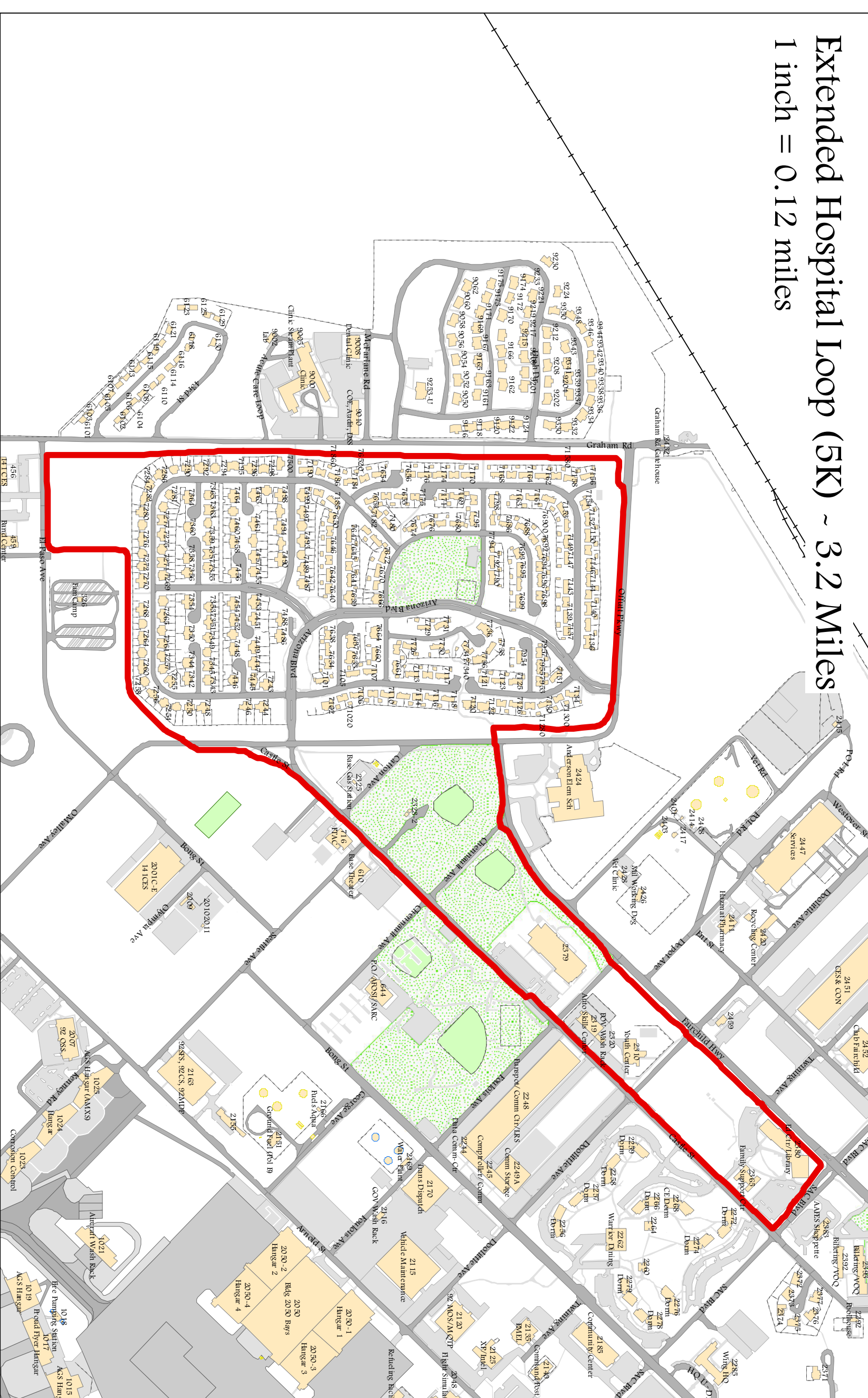
Perimeter Run - 2.6 Miles
1 inch = 0.1 miles



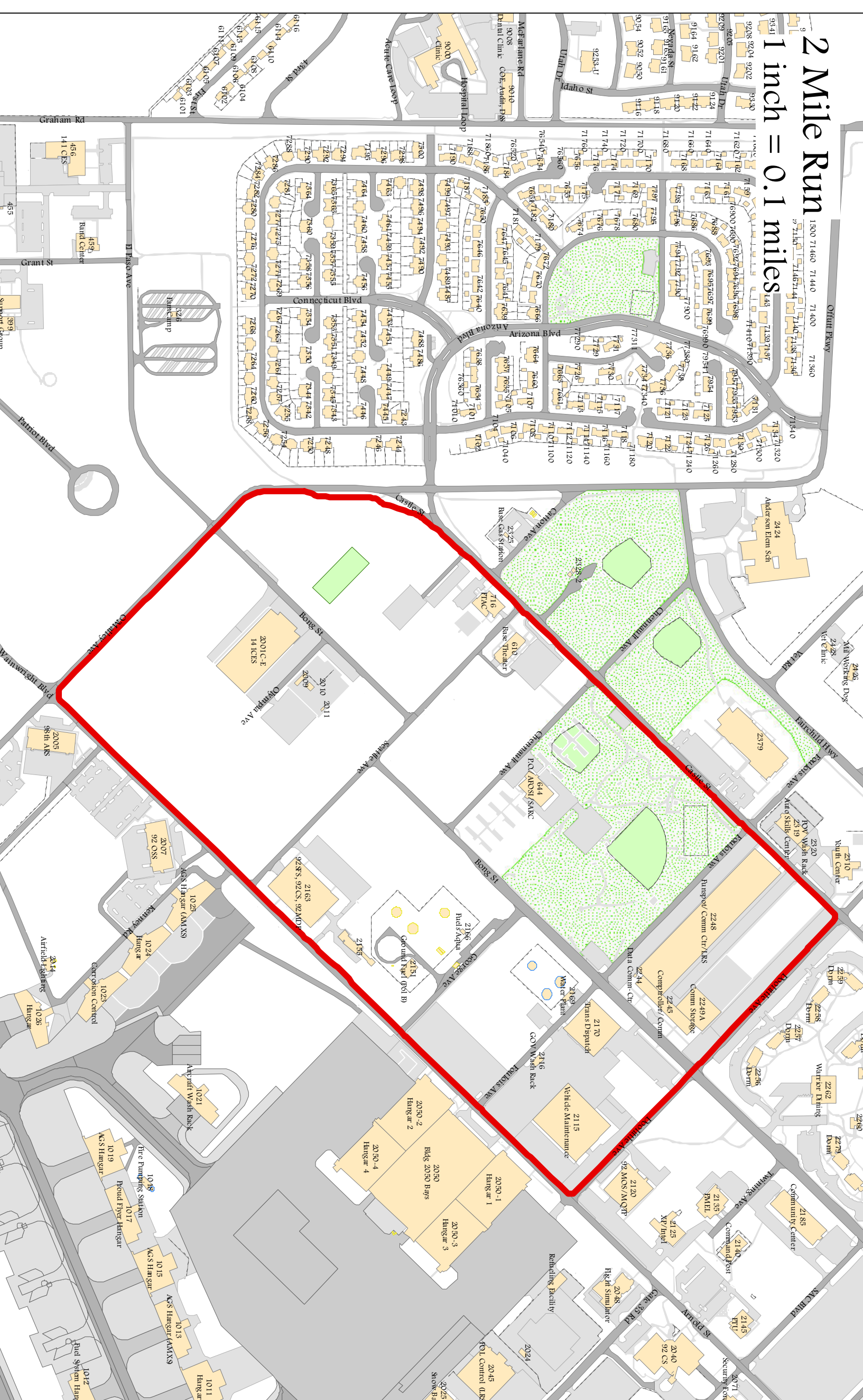
1.5 Mile Route
1 inch = 0.08 miles



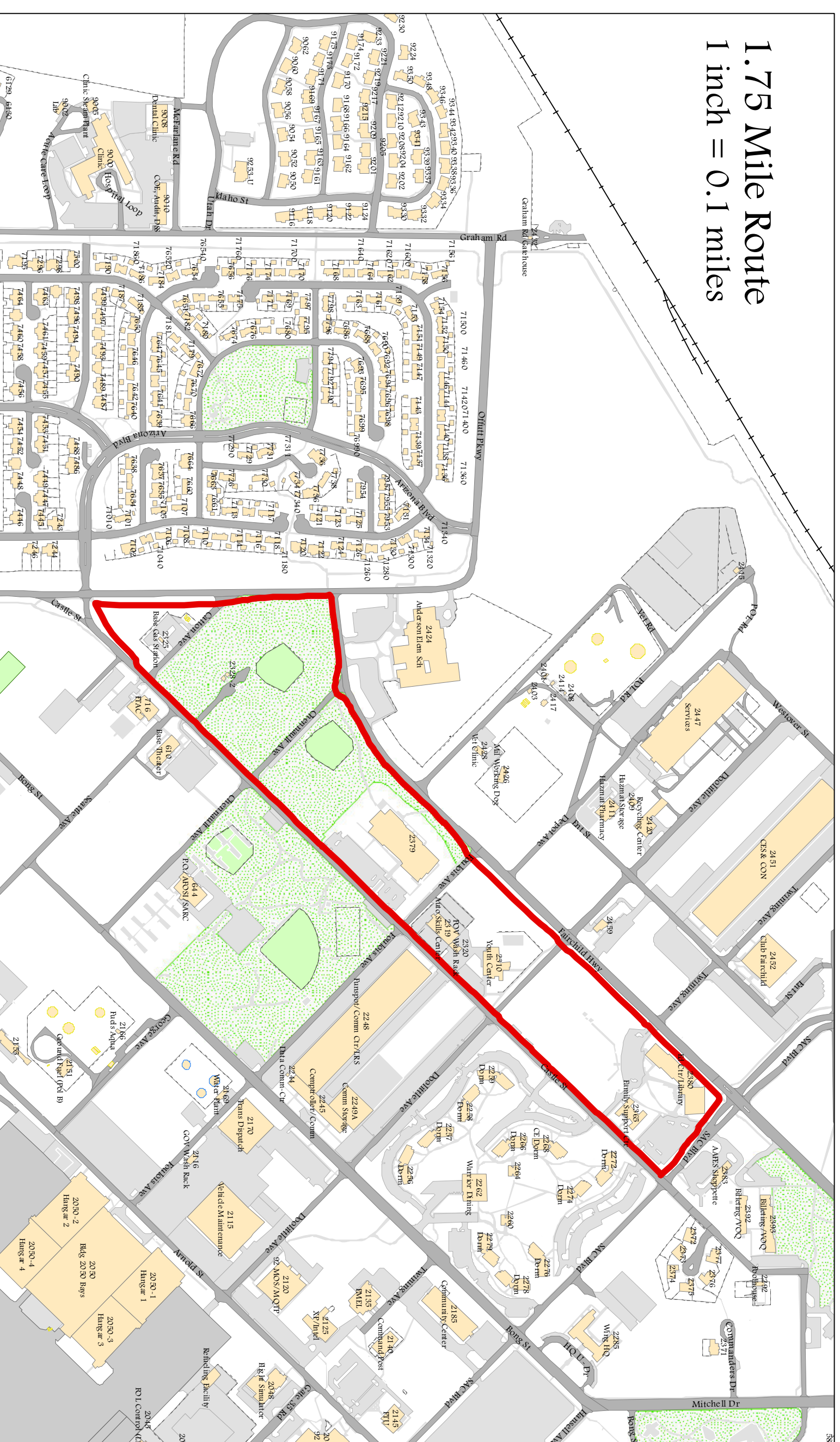
Extended Hospital Loop (EK) - 3.2 Miles
1 inch = 0.12 miles



2 Mile Run
1 inch = 0.1 miles

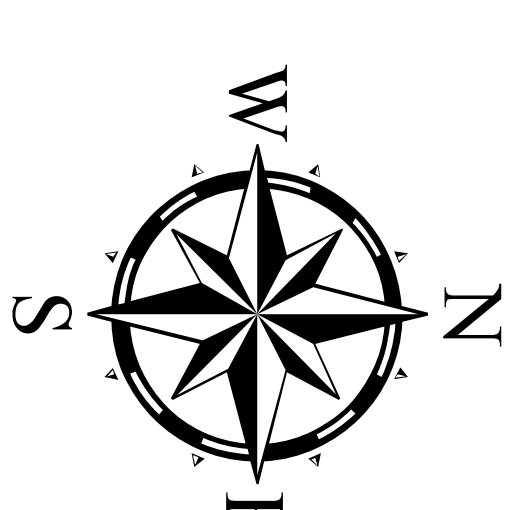


1.75 Mile Route
1 inch = 0.1 miles



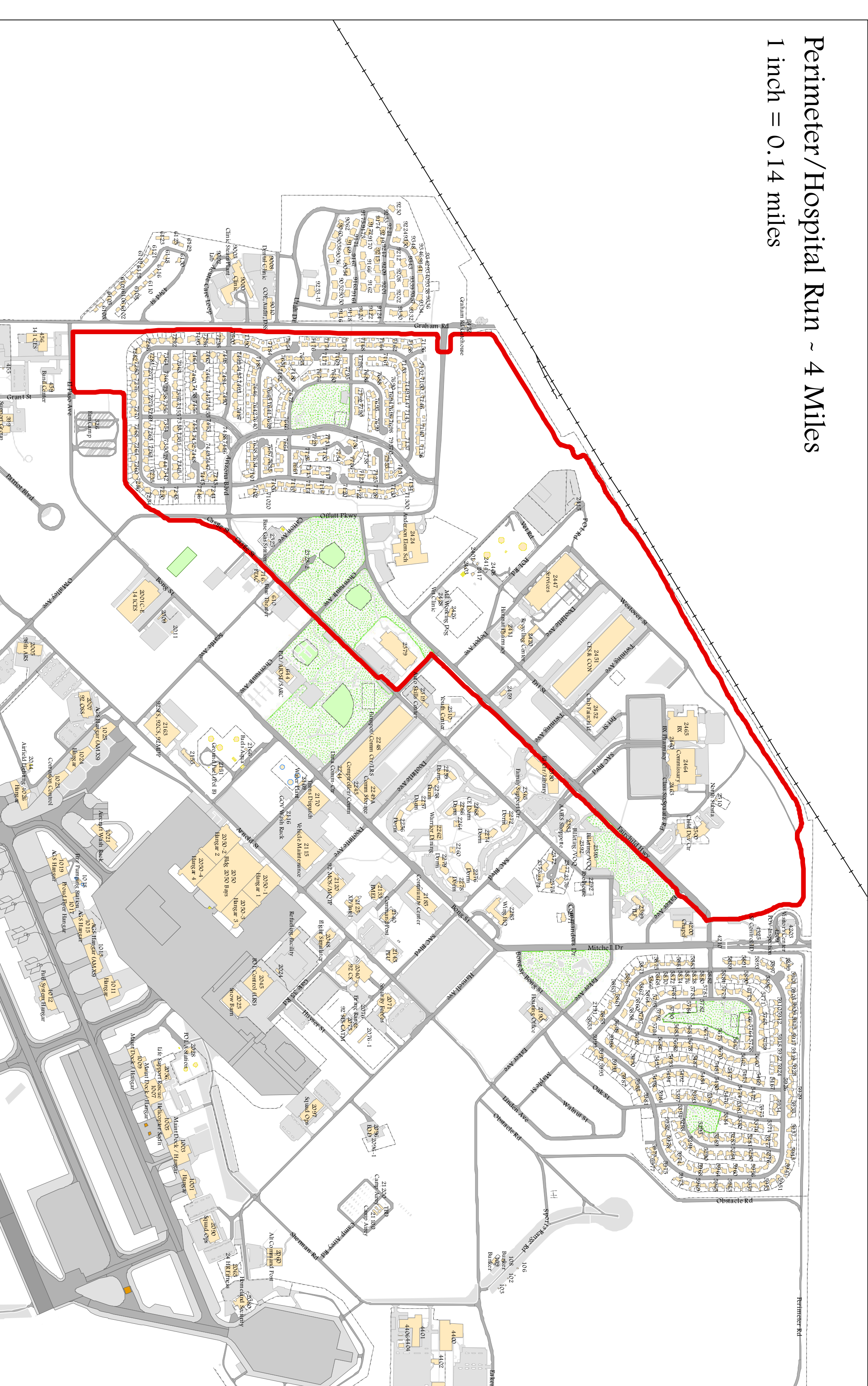
Running Routes

Fairchild AFB

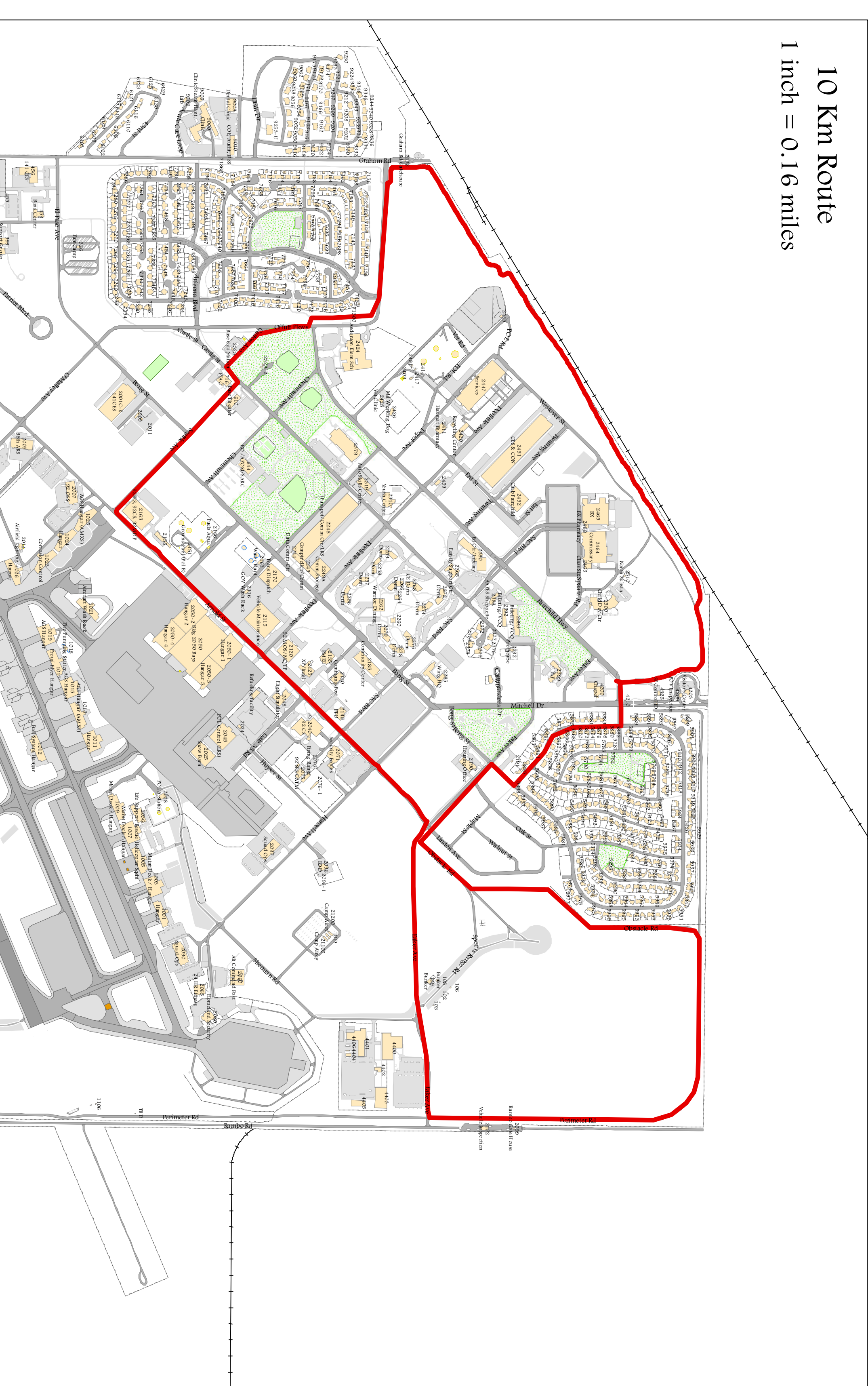


Projection: UTM, Zone 11N
Datum & Spheroid: WGS84
For Official Use Only
PATH: X:\Maps\Maps by Unit\MSG\ FSS Running Routes

Perimeter/Hospital Run - 4 Miles
1 inch = 0.14 miles



10 Km Route
1 inch = 0.16 miles



For Your Safety

- Wear reflective gear during hours of darkness.
- Jog on jogging path or sidewalks.
- Jog facing traffic on the side of the road when there is no sidewalk.
- Remove head phones when crossing the streets or running on roads
- Cross at cross walks where possible.
- Do not walk, jog, run, skate, or skateboard on roadways of high density and peak periods (DODI 6055.4)



UNITED STATES AIR FORCE BASE
FAIRCHILD INN – FAIRCHILD AFB
Television Channel Line Up

General Viewing (Local channels may vary)

3. Channel Guide
4. Local Marketing Channel
5. CBS – KREM **HD**
6. CBS – KLEW **HD**
7. NBC-KHQ **HD**
8. PBS – KSPS **HD**
9. ABC – KXLY **HD**
10. PBS – KWSU **HD**
11. CW – KSKN **HD**
12. FOX-KAYU **HD**
13. Galavision
14. Univision
15. Cartoon Network
16. Nickelodeon
17. Teen NICK
18. NICK Jr.
19. Baby First TV
20. Disney Junior
21. Disney Channel
22. Disney XD
23. Freeform
24. TV Land
25. Hallmark Channel **HD**
26. ReelzChannel **HD**
27. Lifetime **HD**
28. Ovation **HD**
29. Bravo **HD**
30. A&E **HD**
31. FX **HD**
32. FXX **HD**
33. BBC America **HD**
34. TLC **HD**
35. TBS **HD**
36. TNT **HD**
37. USA Network **HD**
38. Animal Planet **HD**
39. NASA TV
40. Discovery **HD**
41. National Geographic **HD**
42. MT **HD**
43. History Channel **HD**

44. ID: Investigation Discovery **HD**
45. Tru TV
46. Food Network **HD**
47. HGTV **HD**

News & Information

48. CNN **HD**
49. CNN Headline News **HD**
50. FOX News **HD**
51. C-SPAN
52. C-SPAN 2
53. Bloomberg Television
54. MSNBC **HD**
55. CNBC **HD**
56. Weather Nation **HD**

Sports & Entertainment

57. ESPN **HD**
58. ESPN 2 **HD**
59. ESPNEWS **HD**
60. ESPN U **HD**
61. Big Ten Network **HD**
62. Fox Sports 1 **HD**
63. Pursuit Channel

Music & More!

64. AXS **HD**
65. AUDIENCE **HD**
66. LINK
67. MTV **HD**
68. MTV2
69. BET **HD**
70. VH1 **HD**
71. CMT **HD**
72. PAR **HD**
73. SyFy **HD**
74. E! Entertainment **HD**
75. Comedy Central **HD**

Movies

76. AMC **HD**
77. Hallmark Movie Channel **HD**
78. Turner Classic Movies **HD**

SPOKANE LOCAL RADIO STATIONS

FM STATIONS

Frequency	Callsign	Format
89.9 FM	<u>KVFS-LP</u>	Variety
89.9 FM	<u>KYMS</u>	Religious
91.5 FM	<u>KUBS</u>	Country
92.9 FM	<u>KZZU</u>	Modern AC
93.7 FM	<u>KDRK</u>	Country
94.5 FM	<u>KHTQ</u>	Rock
96.1 FM	<u>KIIX</u>	Country
96.9 FM	<u>KEZE</u>	Rhythmic CHR
98.1 FM	<u>KISC</u>	Adult Contemporary
98.9 FM	<u>KKZX</u>	Classic Rock
99.9 FM	<u>KXLY</u>	Adult Alternative
101.1 FM	<u>KEYF</u>	Classic Hits
101.9 FM	<u>KTSL</u>	Christian Contemporary
102.3 FM	<u>KICR</u>	Country
103.1 FM	<u>KCDA</u>	Hot AC
103.9 FM	<u>KBBD</u>	Classic Hits
104.9 FM	<u>KEEH</u>	Christian Contemporary
105.7 FM	<u>KZBD</u>	CHR
107.9 FM	<u>KMBI</u>	Religious

AM STATIONS

590 AM	<u>KQNT</u>	Talk
700 AM	<u>KXLX</u>	Sports
790 AM	<u>KJRB</u>	Sports
840 AM	<u>KMAX</u>	News/Talk
920 AM	<u>KXLY</u>	Talk
1050 AM	<u>KEYF</u>	Adult Standards
1080 AM	<u>KVNI</u>	Oldies
1240 AM	<u>KCVL</u>	Country
1280 AM	<u>KZFS</u>	Talk
1330 AM	<u>KMBI</u>	Religious
1510 AM	<u>KGA</u>	Sports

Fairchild Air Force Base, 1942

Fairchild AFB is named in honor of General Muir Stephen Fairchild (1894-1950) a native of Washington. General Fairchild received his wings and commission in 1918, and served as a pilot during World War I. He held various air staff positions during World War II. General Fairchild received his fourth star in 1948, and died on March 17, 1950 while serving as Vice Chief of Staff, USAF. The base was named Fairchild in memory of the general. The formal dedication ceremony was July 20, 1951.

Fairchild AFB was built in 1942 and is a key part in the nation's defense strategy. When the nation was looking for a base to be built, there were two Washington cities in competition: Everett and Spokane. When the team choosing the base came to Spokane, the city offered land to the United States Military. James A. Ford, a managing secretary of Spokane chamber of Commerce, made the offer and Frank Sutherlin, who was in fact the Mayor of Spokane at the time, helped with the offer. After some time Spokane was chosen for the base because it had better weather conditions and had the Cascade mountains that served as a natural barrier. The city leaders had raised \$125,000 dollars from local businesses and public minded citizens and bought 1,400 acres for the construction of the base just west of the city. From 1942 until 1946 the Spokane Army Air Depot served as a repair depot for damaged aircraft coming from the pacific theater.



General Muir Stephen Fairchild



L93-18.213 - A typical B-52 crew of the 92nd Bombardment Wing at Fairchild

Starting in the summer of 1947, the base was transferred to a Strategic Air Command, and was assigned to the 15th Air Force. Then later came 92nd and 98th bomb groups arrived at the base, the two units flew the most advanced bomber in their days the B-29 super fortress. When the war in Korea started both bomber units were deployed to Japan and Guam. After a few months General Douglas Mac Arthur ordered that the 92nd come back to the states while the 98th stayed back in the west. Later the 98th was relocated to a base in Nebraska. Then the 92nd was re-assigned to the 92nd bombardment wing. Actually when the name change dedication ceremony was taking place, the first B-36 Peacemaker, the largest military aircrafts ever built arrived at the base. Then later in 1956 the wing began a conversion that then brought the B-52 Stratofortress to Fairchild. The 92nd became an air refueling squadron with the KC-135 Stratotanker in 1957. Fairchild also helped with bombing operations in Vietnam and other wars. Recently Fairchild served with operations in the Middle East like Desert Storm and Desert Shield, and currently in Iraq and Afghanistan. The 92 Refueling Wing services planes all over the world. Fairchild Air Force Base is a valued member of the Spokane community.